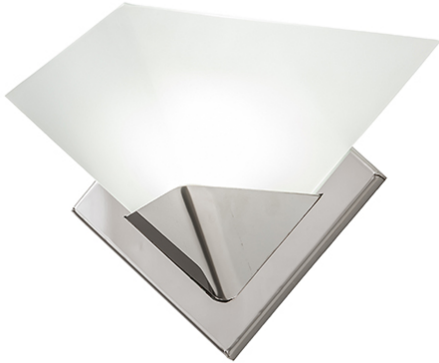




## 12" WIDE TEMPE WALL SCNCE | 270677



### ADDITIONAL INFORMATION

#### Dimensions and Weight

**Availability::** Custom Crafted In Yorkville, New York Please Allow 35 Days

**Item Minimum Height::** [8.5"](#)

**Item Maximum Height::** [8.5"](#)

**Item Length or Depth::** [6.5" Depth](#)

**Item Length or Square::** [6.5" Length](#)

**Item Width or Depth::** [12" Width](#)

**Item Weight::** 2 lbs.

**Base Type::** G9

**Lens Color::** [Clear Frosted GlassStatuario Idalight](#)

#### Lamping

**Quantity::** 1

**Shape::** JCD

**Wattage::** 4 LED

#### Other

**Family::** [Tempe](#)

**Metal Finish::** [Polished Stainless Steel](#)

An exceptional wall luminaire for the discriminating eye, the Tempe is a unique architectural lighting element that features a Clear Frosted Glass angular lens with an inner diffuser offered in Statuario Idalight. A Polished Stainless Steel V-shaped profile embraces both diffuser layers. Use this fixture to illuminate walls in corridors and entryways in residential, hospitality, and commercial areas from Manhattan, New York, to Washington, D.C., And Los Angeles, California. The Tempe Wall Sconce is included in our American-made, American-designed, handcrafted Abstract Lighting Collection and manufactured in Yorkville, New York. UL and cUL listed for dry and damp locations.